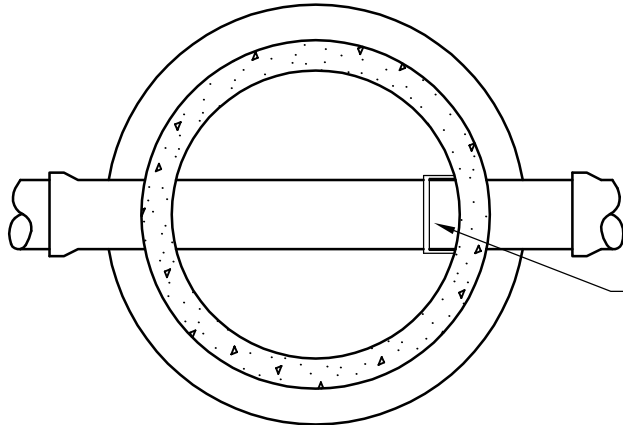


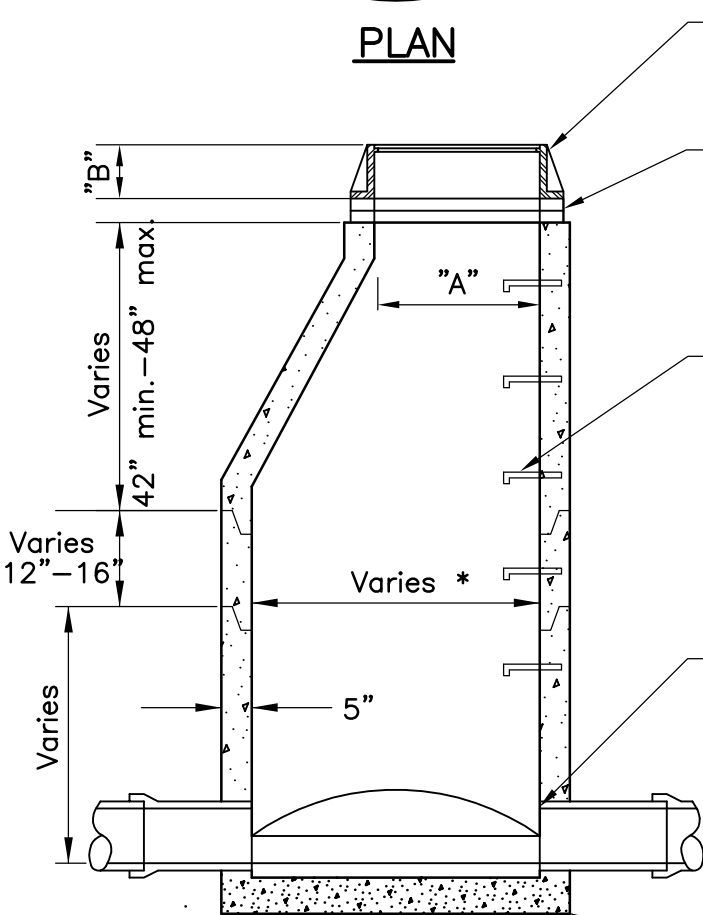
Precast invert must be be 1/2 diameter of the pipe and benches sloped 2" toward the invert.

CASTING	A	B
R1642	27"	7"
R1755G	27"	7"



Manhole steps shall be placed so that offset vertical portion of cone is facing downstream.

PLAN



Neenah frame and type B cover or equal, lettered "Sanitary Sewer" with 2 concealed pick holes. See specification for casting number.

Minimum of 2, maximum of 5 HDPE adjustment rings

Manhole steps, Neenah R1981J or equal, 16" on center. Aluminum steps approved.

Precast invert required.

Pipe shall be cut out flush with inside face of wall.

NOTE: Kor-n-seal manhole or equal considered acceptable alternate. All dog houses shall be grouted on inside and outside.

Minimum thickness of precast base is 6" for 14' deep or less, and increases 1" in thickness for every 4' of depth greater than 14'.

SECTION

* Determined base on pipe size



**STANDARD DETAILS
SANITARY SEWER MANHOLE**



Last Revision:
June 2005

COTTAGE GROVE, MINNESOTA

City Plate No.
SAN-1