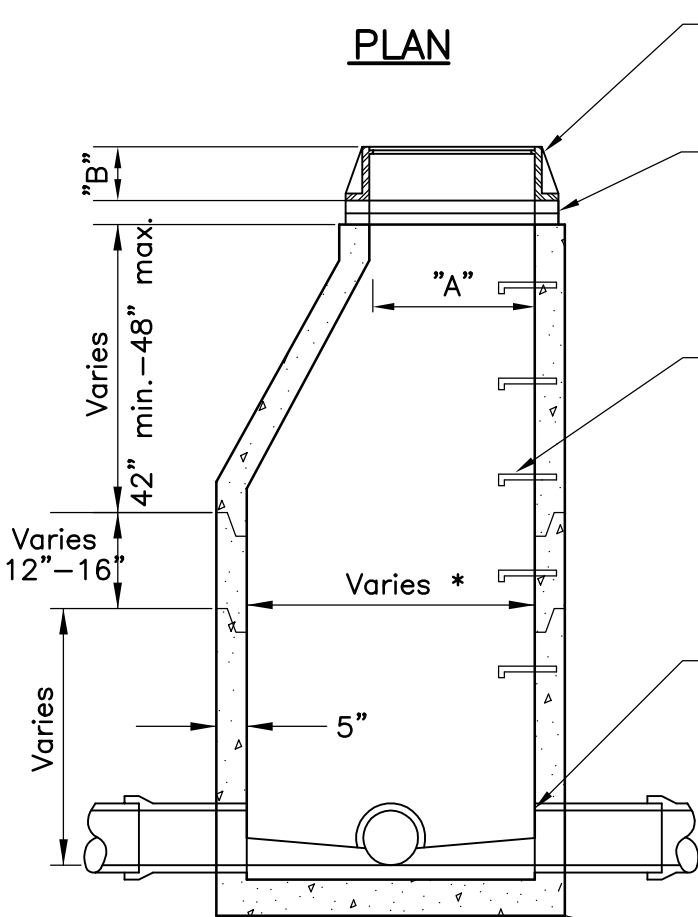


Precast invert must be 1/2 diameter of pipe and benches should be sloped 2" toward invert.

CASTING	A	B
R1642	27"	7"
R1755G	27"	7"

Manhole steps shall be placed so that offset vertical portion of cone is facing downstream.

**PLAN**



Neenah frame and type B cover or equal, lettered "Sanitary Sewer" with 2 concealed pick holes

Minimum of 2, maximum of 5 HDPE adjustment rings

Manhole steps, Neenah R1981J or equal, 16" on center. Aluminum steps approved.

Precast invert required.

Pipe shall be cut out flush with inside face of wall.

**NOTE:** Kor-n-seal manhole or equal considered acceptable alternate.

All dog houses shall be grouted on both inside and outside.

Minimum thickness of precast base is 6" for 14' deep or less, and increases 1" in thickness for every 4' of depth greater than 14'.

**SECTION**

\* Determined base on pipe size



**STANDARD DETAILS**  
SANITARY SEWER JUNCTION MANHOLE



Last Revision:  
June 2005

**COTTAGE GROVE, MINNESOTA**

City Plate No.  
SAN-2