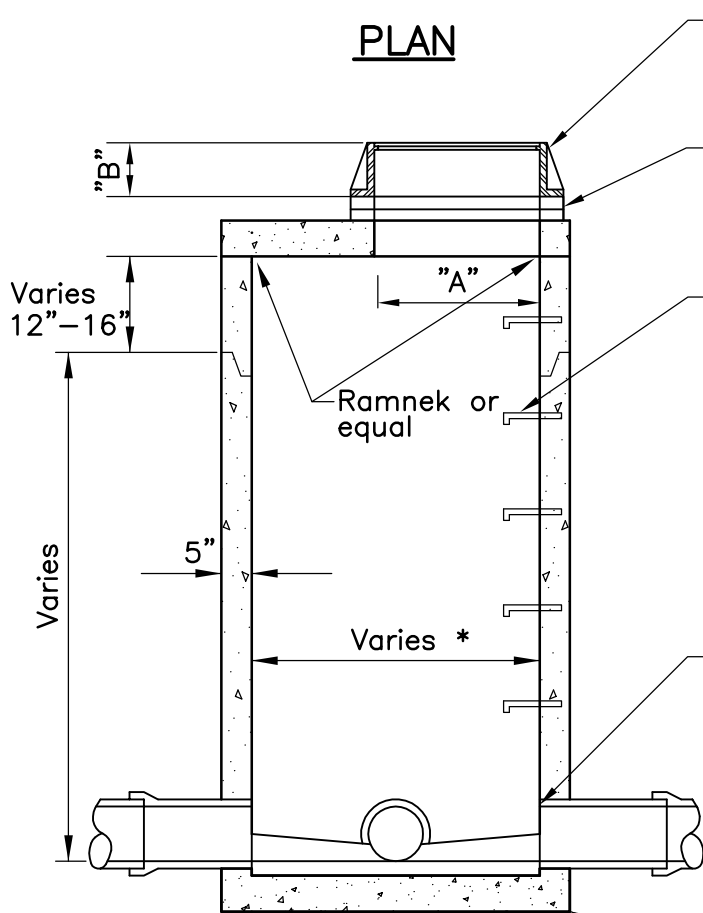


Precast invert must be 1/2 diameter of the pipe and the benches sloped 2" toward invert.

CASTING	A	B
R1642B	27"	7"
R1755G	27"	7"

Manhole steps shall be placed so that offset vertical portion of cone is facing downstream.

PLAN



Neenah frame and cover or equal, lettered "Sanitary Sewer", with 2 concealed pick holes.

Minimum of 2, maximum of 5 HDPE adjustment rings

Manhole steps, Neenah R1981J or equal, 16" on center. Aluminum steps approved.

Precast invert is required.

Pipe shall be cut out flush with inside face of wall.

NOTE: Kor-n-seal manhole or equal considered acceptable alternate.

All dog houses shall be grouted on the inside and outside.

Minimum thickness of precast base is 6" for structures 14' deep or less, and increases 1" for every 4' of depth greater than 14' deep.

SECTION

* Determined by pipe size



STANDARD DETAILS
SANITARY SEWER JUNCTION MANHOLE
WITH REINFORCED TOP SLAB



Last Revision:
 June 2005

COTTAGE GROVE, MINNESOTA

City Plate No.
SAN-3