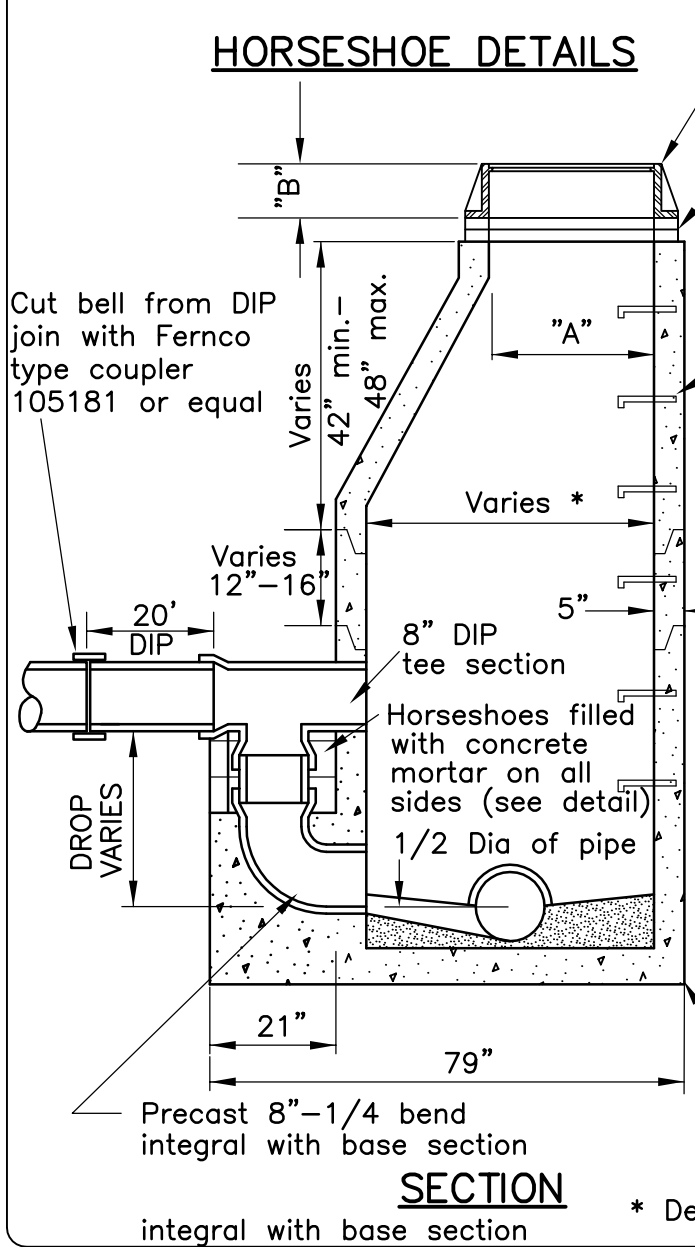


CASTING	A	B
R1642B	27"	7"
R1755G	27"	7"

HORSESHOE DETAILS



Neenah frame and cover or equal, lettered "Sanitary Sewer", with 2 concealed pick holes.

Minimum of 2, maximum of 5 HDPE adjustment rings

Manhole steps, Neenah R1981J or equal, 16" on center. Aluminum steps approved. Manhole steps shall be placed so that offset vertical portion of cone is facing downstream.

Precast invert is required.

Pipe shall be cut out flush with inside face of wall.

NOTE: Kor-n-seal manhole or equal considered acceptable alternate.

All dog houses shall be grouted on the inside and outside.

Precast invert should be 1/2 diameter of pipe and benches sloped 2" toward invert.

Minimum thickness of precast base is 6" for 14' deep or less, and increases 1" in thickness for every 4' of depth greater than 14' deep.

SECTION

integral with base section

* Determined by pipe size



STANDARD DETAILS
SANITARY SEWER DROP INLET MANHOLE



Last Revision:
June 2005

COTTAGE GROVE, MINNESOTA

City Plate No.
SAN-4