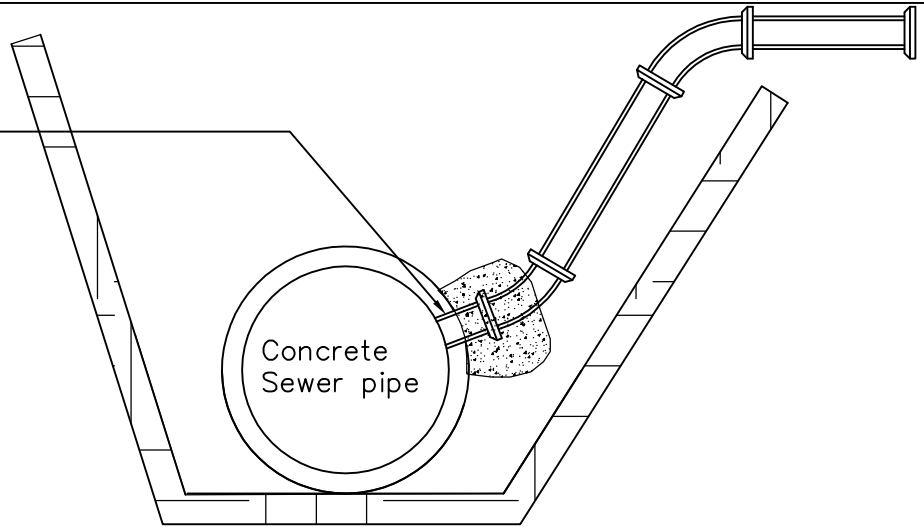


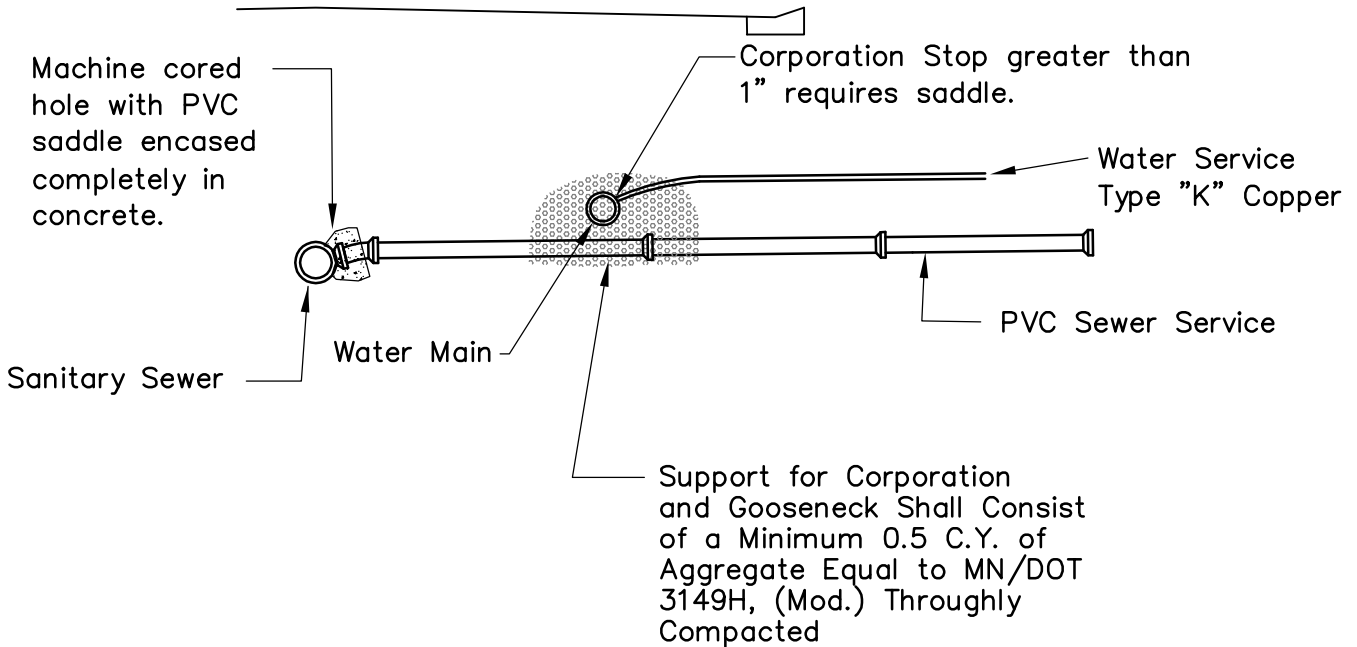
Machine cored hole with cast iron saddle with stainless steel bands around the pipe. The saddle to be completely encased in concrete.



CONCRETE SANITARY OR STORM SEWER

NOTE:

Service connections to be at 2 o'clock or 10 o'clock position.



WATER AND PVC SANITARY SEWER



STANDARD DETAILS
PRIVATE CONNECTIONS TO
PUBLIC UTILITIES



Last Revision:
June 2005

COTTAGE GROVE, MINNESOTA

City Plate No.
SER-9