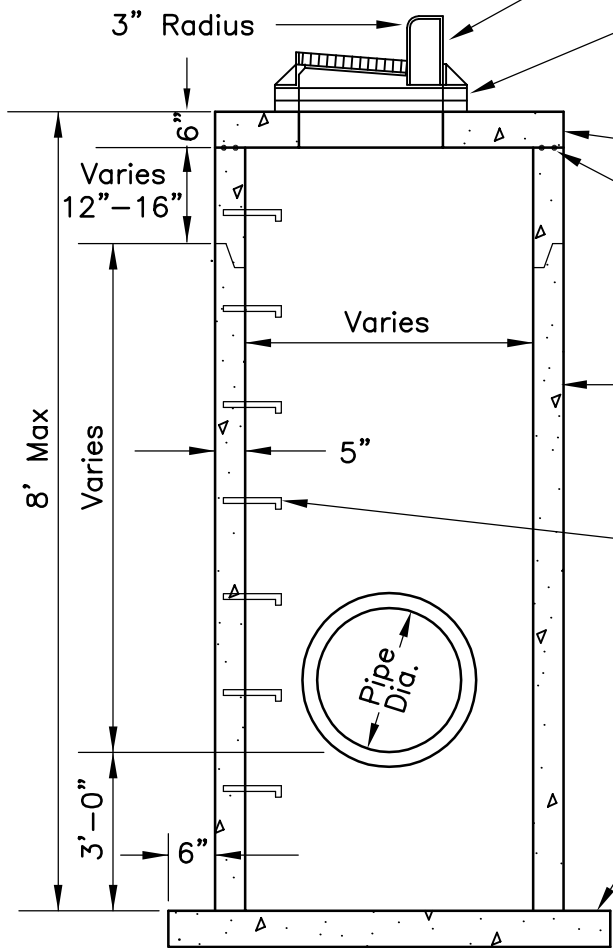


24"x36" slab opening for Neenah R3290-VB or equal

Dimension from back of curb to center of pipe.

- 4' Dia. MH - 9" in from Back of Curb
- 5' Dia. MH - 3" in from Back of Curb
- 6' Dia. MH - 3" behind Back of Curb
- 7' Dia. MH - 9" behind Back of Curb
- 8' Dia. MH - 15" behind Back of Curb

**PLAN**



Neenah R3290-VB casting or equal with Vane Grate.

Minimum of 2, maximum of 5 HDPE adjustment rings

6" precast reinforced concrete slab.

Top of barrel section below top slab to have flat top edge sealed with 2 beads of Ramnek or equal.

Precast concrete section

Doghouses shall be grouted on both the outside and inside.

Manhole steps, Neenah R1981J or equal, 15" o.c., Aluminum steps approved.

No block structures are allowed.

Minimum slab thickness, 6" for 14' depth. Increase thickness 1" for each 4' of depth greater than 14', and reinforce with 6"x6" 10/10 mesh.

**SECTION**

No drain holes



**STANDARD DETAILS**  
CATCHBASIN MANHOLE WITH SUMP



Last Revision:  
June 2005

**COTTAGE GROVE, MINNESOTA**

City Plate No.  
STO-21